

belulu® CaviUp!

美・ル・ル キャビアップ

Manual



Thank you very much for purchasing this product. Please read this user's manual carefully before using the product. There is a guarantee certificate at the end of this document, so please make sure to store it in a safe place.

Warning

- Make sure to use the right voltage, AC adapter, etc., by following the specifications in this document.
- When using this product, do not look directly into the LED light, or point it toward your eyes. Looking directly into the LED may be harmful to the eyes.
- Do not use this product if you find any problems with it, including any damages, faults, deformities, broken cables, etc.
- ▲ If you notice any smoke, offensive smell, abnormal heat, etc. coming from the product, turn the power off and stop using it immediately.
- Do not pull on the power adapter cable or touch the plug area with wet hands.
- Do not leave or use this product or the power adapter in places that may be subject to high temperatures, such as stoves, etc.
- Avoid using this product with wet hands, or when it is damp or covered in dirt, etc.
- This product is not waterproof. Never use this product in places with high humidity, such as bathrooms, etc. This may cause burns, electric shocks or product faults.
- If you notice any abnormal effect on your skin, stop using this product and consult your physician.
- Look at the list below carefully, and do not use this product if any of those conditions apply to you.
- Never attempt to disassemble or reassemble, or do any type of maintenance work on this product by yourself. This may cause the product or its accessories to become damaged or faulty. Any issues caused to the product or its accessories by these actions are not covered by the product guarantee, and the company shall bear no responsibility for them.
- ▲ Avoid using this product excessively on sensitive areas of your skin.
- If you experience any pain, etc. during use, move the 3D head immediately away from your skin.
- Do not subject the product to any strong actions such as by dropping or hitting it.
- The product is fully charged within approximately 4 to 8 hours. Do not continue to charge it once it is fully charged.
- Disconnect the charger cable from the product when it is not being charged.
- Do not wash this product with water. If dirty, take a damp cloth, wring it well, and use it to clean the product gently. Do not use solvents such as benzene, thinners, etc. to clean this product.
- Any injuries, faults, damages, etc. caused to the product due to your failure to follow the important notes and warnings stated above, any incorrect use or disassembly/reassembly of the product, or any maintenance work done by yourself, are not covered by the product guarantee, and the company shall bear no responsibility for them.

(Danger)

- Acute diseases ● Febrile illnesses ● Blood pressure disorders ● Infectious diseases ● Heart diseases ● Usage of medical electronic equipment (implanted medical devices, such as pacemakers, etc., electronic life-support equipment, such as heart-lung machines, etc.) or wearable medical electronic devices, such as wearable electrocardiogram devices, etc.) ● History of skin cancer ● Skin disorders caused by diabetes or other diseases ● Currently pregnant ● Currently breast-feeding ● Skin conditions (atopic dermatitis, skin inflammation due to overexposure to the sun, infected and inflamed acne, and sensitive skin due to allergic reactions) ● Dermatitis caused by cosmetics ● Generally not in good physical health ● Usage of long-term doses of steroid hormones drugs, etc.

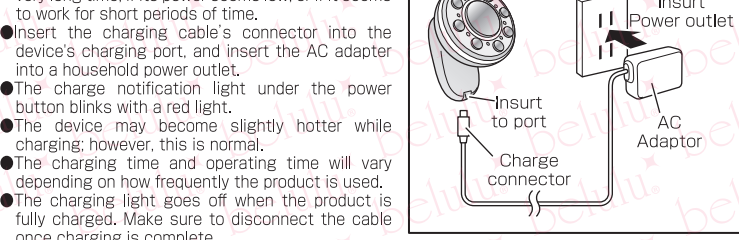
(Do not apply these parts)

- Malignant tumors ● Cuts ● On bones or joints ● Areas with silicone due to plastic surgery, etc. ● Vocal cords area ● Delicate zones such as hair, around the eyes and ears, mucous membranes, etc.

■ Please charge for 1 hour before the first time using ■

Parts & Specification

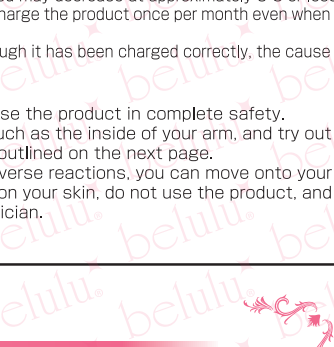
*There may be some changes without any notice.



[Specification]
 Charge: 4~8 hours Input: 5V/0.5A Battery: Lithium Ion Battery
 Size: 180x45(Head)x35mm(Body) Weight: 100g

[AC Adaptor]
 Input: 100~240V 50/60Hz 0.2A Output: 5V/1A

- Make sure to recharge the product in the following situations: if you are using the product for the first time after purchase, if you have not used it for a very long time, if its power seems low, or if it seems to work for short periods of time.
- Insert the charging cable's connector into the device's charging port, and insert the AC adaptor into a household power outlet.
- The charge notification light under the power button blinks with a red light.
- The device may become slightly hotter while charging; however, this is normal.
- The charging time and operating time will vary depending on how frequently the product is used.
- The charging light goes off when the product is fully charged. Make sure to disconnect the cable once charging is complete.
- This product cannot be used while connected to the charging cable. Make sure to check that the charging cable is disconnected when using the product.
- The most suitable room temperature for charging is 15°C to 30°C. Charging the product at low temperatures may shorten its battery life, so make sure to charge the product at the appropriate temperature. In addition, the product's charging speed may decrease at approximately 0°C or less.
- In order to protect the built-in battery, make sure to charge the product once per month even when you are not using it for long periods of time.
- If the product's operating time seems short even though it has been charged correctly, the cause of this is likely to be the battery life.



- Make sure to do a patch test so that you can use the product in complete safety.
- Apply some lotion to a weak part of your skin, such as the inside of your arm, and try out all the functionality provided by the product as outlined on the next page.
- Once you have verified that you have had no adverse reactions, you can move onto your face care. If you do experience any abnormality on your skin, do not use the product, and make sure to consult our company or your physician.

belulu CaviUp! specification

Red LED

630nm red light - good for skin cell activating, metabolism, collagen and blood stimulation, rejuvenate skin, anti-aging, anti-wrinkle, shrink pore size and help curing wounds.

Cavitation (CV)

CV Micro-Vibration with 6MHz ultrasonic vibration can effectively break the fat tissue and remove excess cellulite through lymphatic drainage and metabolism.

Radio Frequency (RF)

RF Thermage procedures can effectively and safely treat fine lines and wrinkles on most body parts.

*Cavitation & RF work at the same time, you cannot use separately.

EMS

Electrical Muscle Stimulation, is used to activate the skin cell, stimulating rejuvenation of collagen, to improve skin elasticity, soften wrinkles and leave skin looking smooth and healthy.

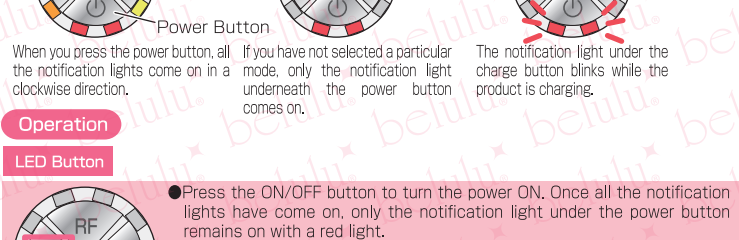
Combination

You can choose and combination these functions. Especially Cavitation + RF combination works well.



Red LED... You can choose Blinking mode/Normal mode.
 Radio Frequency... There are 4 energy levels for option.

Power & Notification Lights

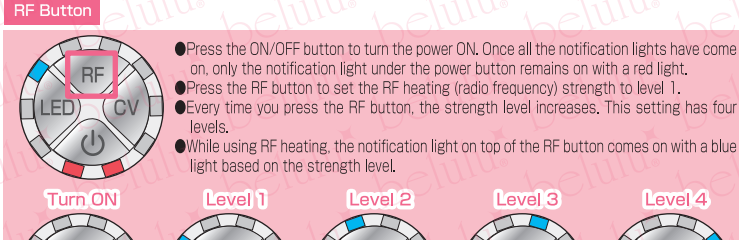


When you press the power button, all the notification lights come on in a clockwise direction. If you have not selected a particular mode, only the notification light underneath the power button comes on. The notification light under the charge button blinks while the product is charging.

Operation

LED Button

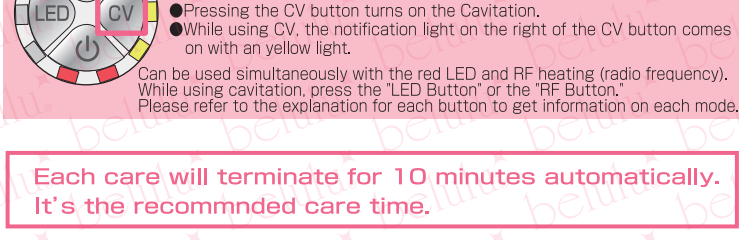
- Press the ON/OFF button to turn the power ON. Once all the notification lights have come on, only the notification light under the power button remains on with a red light.
- Pressing the LED button turns on the red LED.
- Every time you press the LED button, the red LED switches between on → blinking → off.
- While the red LED is on or blinking, the notification light on the left of the LED button comes on with an orange light.



Can be used simultaneously with RF heating (radio frequency) and cavitation. While using the product in red LED mode, press the 'RF Button' or the 'CV Button.' Please refer to the diagram on the right to get information on each mode.

RF Button

- Press the ON/OFF button to turn the power ON. Once all the notification lights have come on, only the notification light under the power button remains on with a red light.
- Press the RF button to set the RF heating (radio frequency) strength to level 1.
- Every time you press the RF button, the strength level increases. This setting has four levels.
- While using RF heating, the notification light on top of the RF button comes on with a blue light based on the strength level.



Can be used simultaneously with the red LED and cavitation. While using RF heating (radio frequency), press the 'RF Button' or the 'CV Button.' Please refer to the explanation for each button to get information on each mode.

CV Button

- Press the ON/OFF button to turn the power ON. Once all the notification lights have come on, only the notification light under the power button remains on with a red light.
- Pressing the CV button turns on the Cavitation.
- While using CV, the notification light on the right of the CV button comes on with a yellow light.

Can be used simultaneously with the red LED and RF heating (radio frequency). While using cavitation, press the 'LED Button' or the 'RF Button.' Please refer to the explanation for each button to get information on each mode.

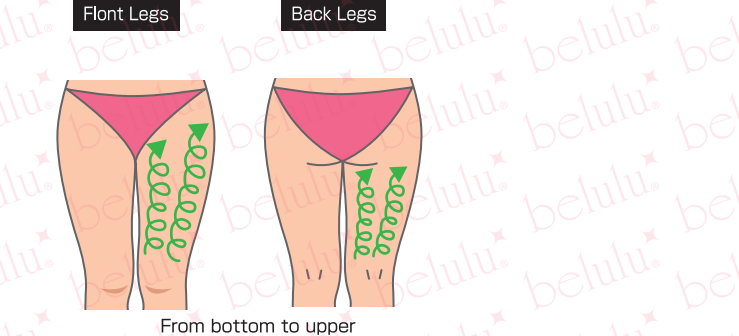
Each care will terminate for 10 minutes automatically. It's the recommended care time.



Basic Treatment

- When doing your own skin care, make sure to use a gel or cream. If you were to use this document on dry skin, it could cause the 3D head to move less smoothly, potentially damaging your skin.
- Apply the head area onto the skin by going down in a straight line. Also, do not press it down or rub it hard along the skin. Make sure to move the head gently and smoothly along the skin.
- If you notice any abnormality on your skin while using the product, or if you feel that it does not suit your skin in any way, stop using it immediately, and contact us or consult your physician.

■ RF+CV ■
 You can treat one parts for 10 minutes or change to care parts for every few minutes.
 Tighten up the faceline



Each body parts
 Slide softly and make small circle. Please apply any cream to slide.



Basic Treatment

- Red LED ■
- Do not look directly into the LED light, or point it toward your eyes. Please close your eye when use.
- Please apply any cream to slide.
- If you notice any abnormal effect on your skin, stop using this product and consult your physician.

▲ If the red LED onto your areas of concern, such as wrinkles, etc. If you place the product about 1cm away from the skin, the light will be projected evenly across the area.

After using
 ● Press the power button to turn it off.
 ● If the 3D head is dirty, use a damp cloth to clean it.
 ● Avoid storing in places with high temperatures, high humidity, or under direct sunlight, as well as places that are highly dusty or within the reach of children.

This document promises to make the following repairs based on the following conditions. If you were to encounter a fault within the time period specified below from your date of purchase, you may make a repair request on presentation of this document.

[Repair policy]
 1. We would be happy to make repairs if a fault is encountered under normal usage based on the instructions given in this user's manual.
 2. Repairs requested for faults that have occurred during the product guarantee period may be made by presenting the product and this document.
 3. Even if the product is still under the guarantee period, repairs would be chargeable under the following circumstances:
 a. For any fault or damage caused by the incorrect use, unauthorized repair, or reassembly of the product.
 b. For any fault caused after purchase during transit, transportation, or due to the product falling to the ground.
 c. For any fault or damage caused by fire, earthquake, lightning, or any other natural disaster, as well as any public hazard or abnormal voltage.
 d. If this document is not presented when requesting the repair.
 e. If this document does not include the customer's name, date of purchase, or if this information has been rewritten over the top.
 4. This document is valid in Japan only.

[Warranty] *Only for the main device only
 ● When purchasing by mail order, it does not matter if this document does not include the purchase date or store stamp, as customers' information and purchase histories are generally managed by the store. However, your order number will be required when making an inquiry or requesting a repair, so please make sure to make a note of your order number in a safe place.
 ● This guarantee certificate constitutes our promise to make repairs based on the conditions and the guarantee period specified in this document. Therefore, (for the main device only) this guarantee certificate does not affect customers' statutory rights. Please contact us if you have any queries about the guarantee period.

Regardless of the number of times that the product has been used, if a repair request is made 3 months after the date of purchase, the customer shall be liable for the return postage fee.
 Outside of the guarantee period, if after diagnosis we consider that repairing the product would be feasible, you may request for such a repair to be executed subject to a repair fee.
 We accept a refund only for defective within 7 days.

Please feel free to contact us.
 TEL: +81-50-4560-1423
 E-mail: support@kireido.com
 ZIP: 231-0045
 Add: Beautiful Angel Co., Ltd.
 Mariya building 5F Isezakicho
 2-66, Naka-ku
 Yokohama, Kanagawa
 Japan